

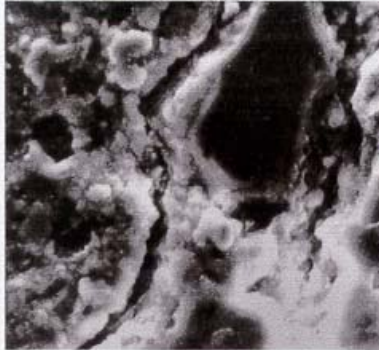


KALMATRON KF-E

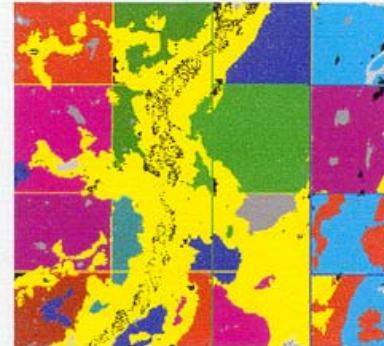
KALMATRON®KF-E_{COAT}, KALMATRON®KF-E_{HARD} & KALMATRON®KF-E_{ADMIX}

ARE COMPOSITIONS WITH SUPER-FINE PIGMENTS FOR WATERPROOFING AND COLORING OF BUILDING MATERIALS BY ADMIXTURE & STRUCTURES BY ADMIXTURE & COATING WITH UNLIMITED RANGE OF COLORS

BEFORE ...



AFTER



MORE THAN
2000 COLORS
& PATTERNS
ARE
AVAILABLE

ADVANTAGES OF COATING KF-E_{COAT}

- Simplest surface preparation before application - just wet the surface by water.
- Applicable under low temperature on site.
- No specific qualification of staff is required.
- No costly removal & replacement of the deteriorated structure - just restore it.
- Impermeability of wall's seepage is 100%.

ADVANTAGES OF HARDENER KF-E_{HARD}

- Non-Rusting - Stain Resistant.
- Permanent color - non-fading.
- Curing effect of fresh concrete surface is provided.
- Varied types of finishes and coloring effects to concrete surfaces.
- Increase serviceability of concrete floors.

ADVANTAGES OF ADMIXTURE KF-E_{ADMIX}

- The water-cement ratio is the standard or lower up to 10%.
- The time of mixing is the standard and viscosity of mix is much better.
- Slump is higher up to 20% without additional water.
- Shrinkage is lower up to 35%.
- Impermeability of structure is 100%.

KF-E IS MULTI-FACETED COMPOSITION: WHICH GUARANTEE YOU REAL SAVINGS OF AS MUCH AS 45% OR MORE ON REPAIRS OF:

- GARAGE FLOORS • SIDEWALKS • CURB & GUTTERS • FOUNDATIONS • ROOFS • PLASTERING
- FENCES • STREET & ROAD SLABS • SWIMMING POOLS • TUNNELS • SEWAGE & PETROLEUM TANKS • GASOLINE STATIONS • BRIDGE DECKS & PILLARS • **and much more.**

NOTE: The colors shown below are approximate in colored concrete and colored coatings, subject to variations due to cement change or mixing, placing, finishing and curing methods.